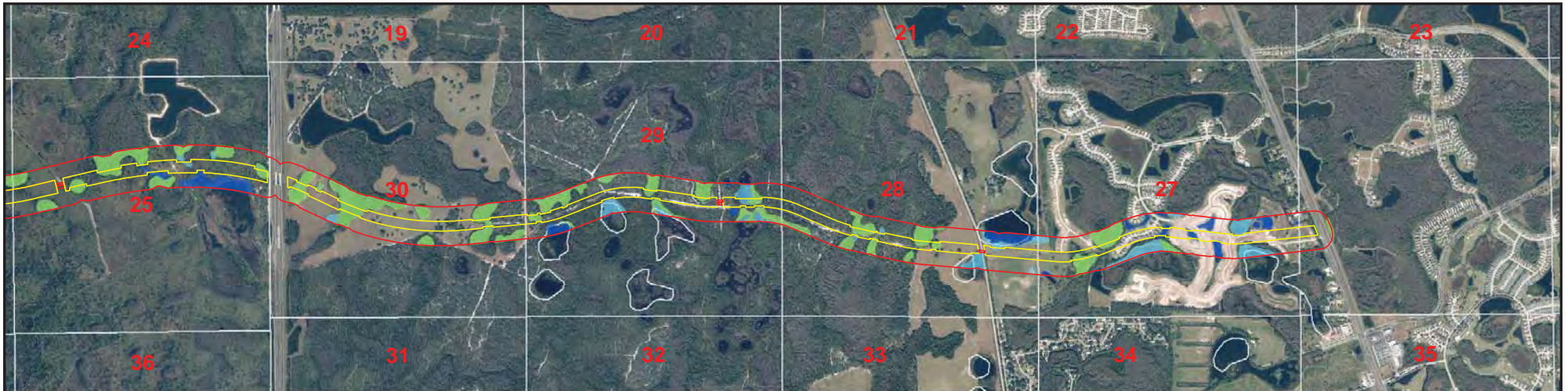
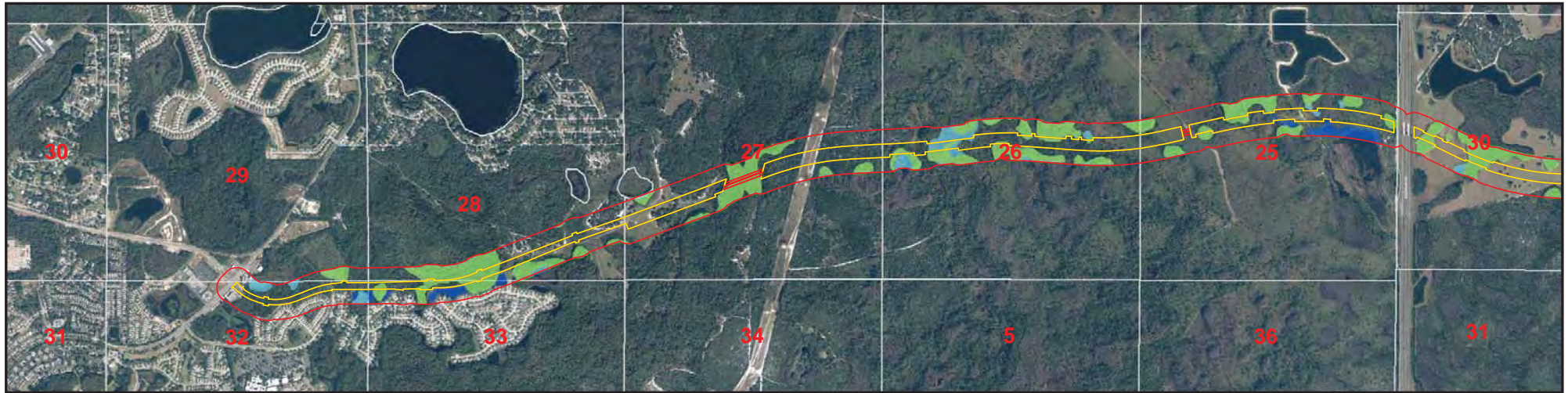


Map Set F-9

Wetland Impact Maps, Alternatives 2-17



**Wetland Impacts Map
Alternative 2 Ridge Road Extension**

1 inch = 2,000 feet

Legend	
	Alternative 2
	Area of Analysis
Wetlands and Waterbodies	
	Emergent
	Forested
	Surface Waters

Pasco County Florida

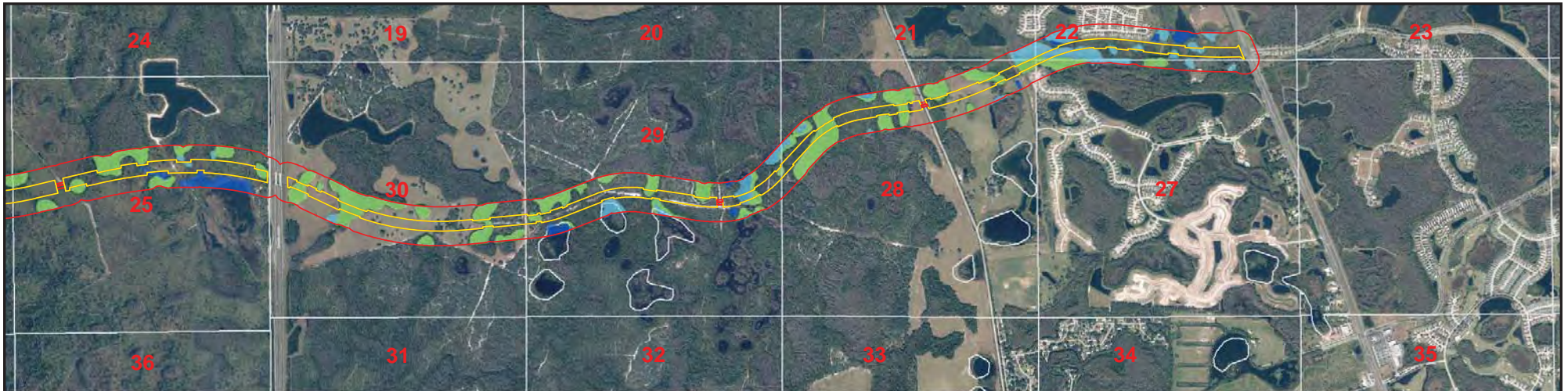
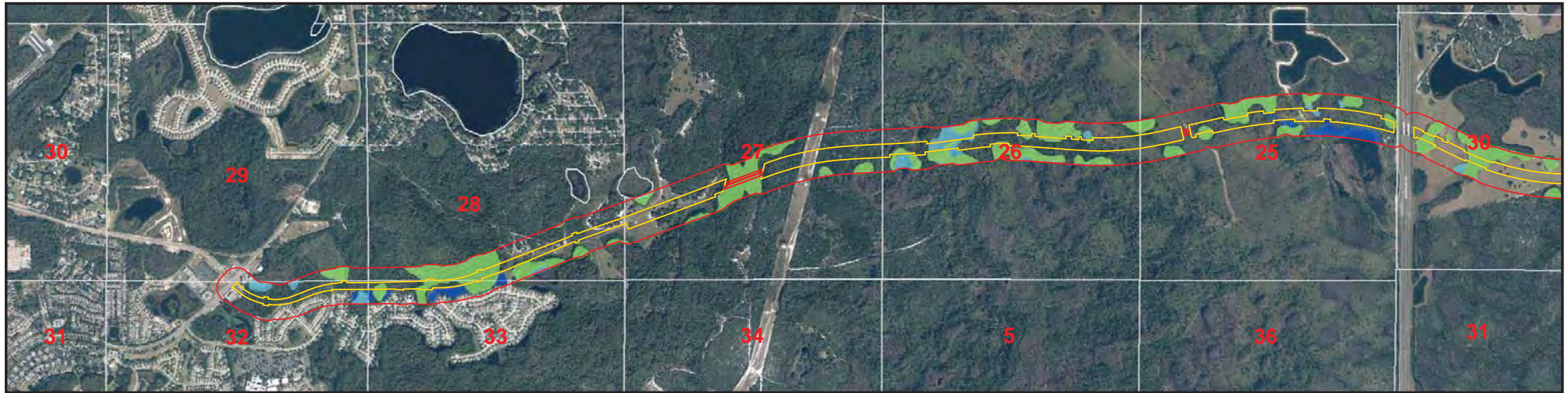


**Ridge Road Extension
Alternatives Analysis**



Drawn Nov. 2014

object Number: 5504-005 D Document: A1_2_wetlands_2014_2.pdf



**Wetland Impacts Map
Alternative 3 Ridge Road Extension**

1 inch = 2,000 feet

Legend	
	Alternative 3
	Area of Analysis
Wetlands and Waterbodies	
	Emergent
	Forested
	Surface Waters

Pasco County Florida

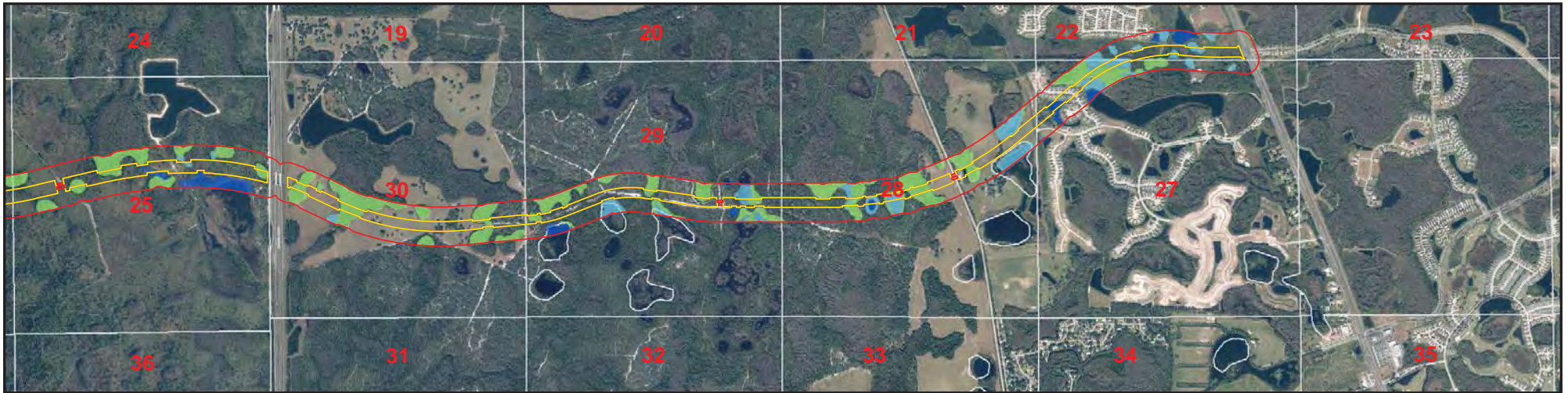
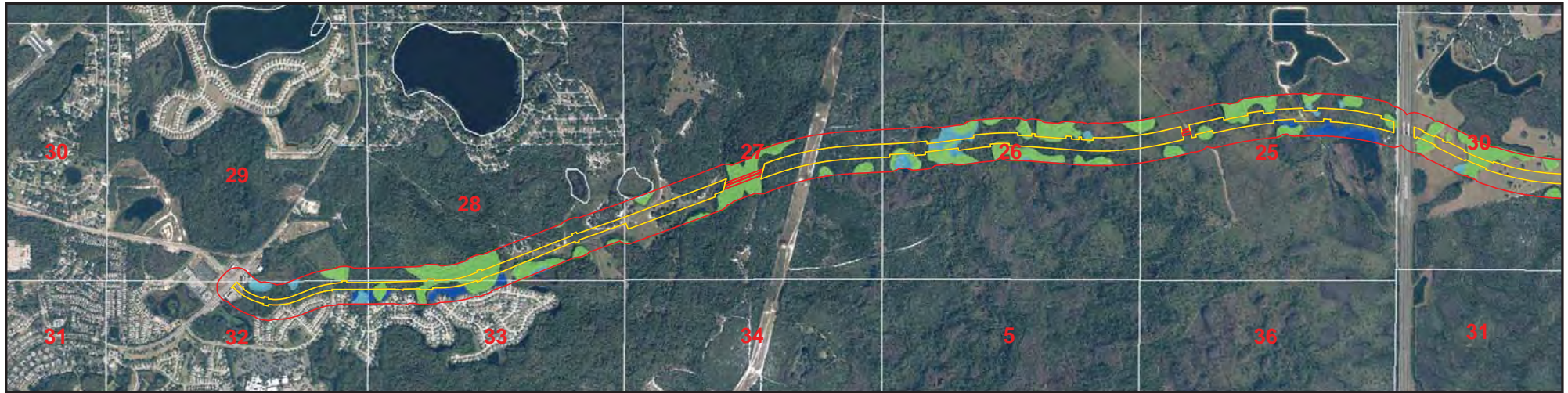


**Ridge Road Extension
Alternatives Analysis**



Drawn Nov. 2014

object Number: 5504-005 D Document: A1_3_wetlands_2014_24.pdf



**Wetland Impacts Map
Alternative 4 Ridge Road Extension**

1 inch = 2,000 feet

Legend

- Alternative 4
- Area of Analysis
- Wetlands and Waterbodies**
- Emergent
- Forested
- Surface Waters

Pasco County Florida

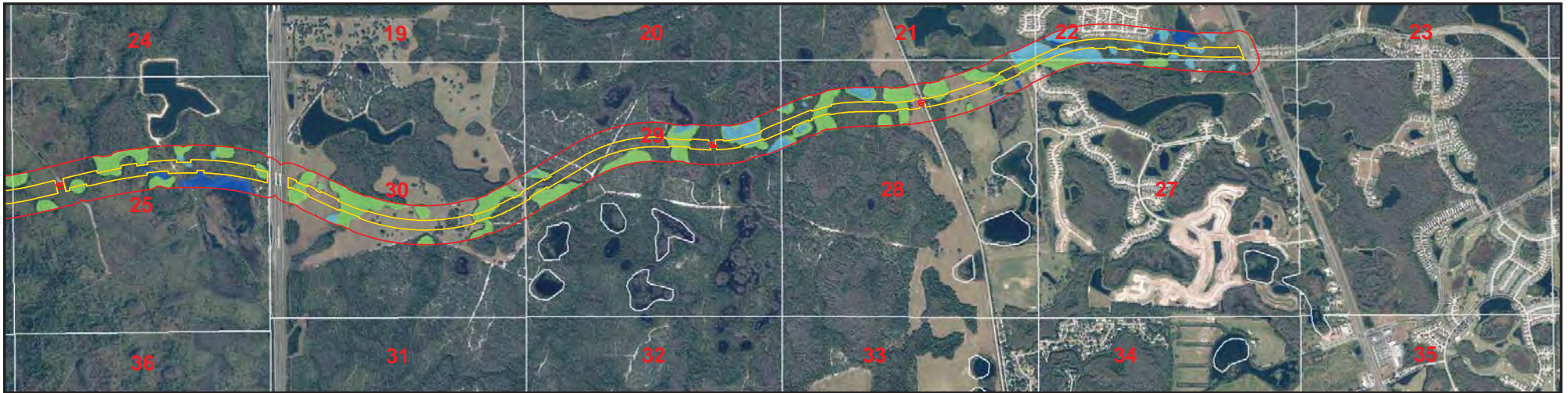
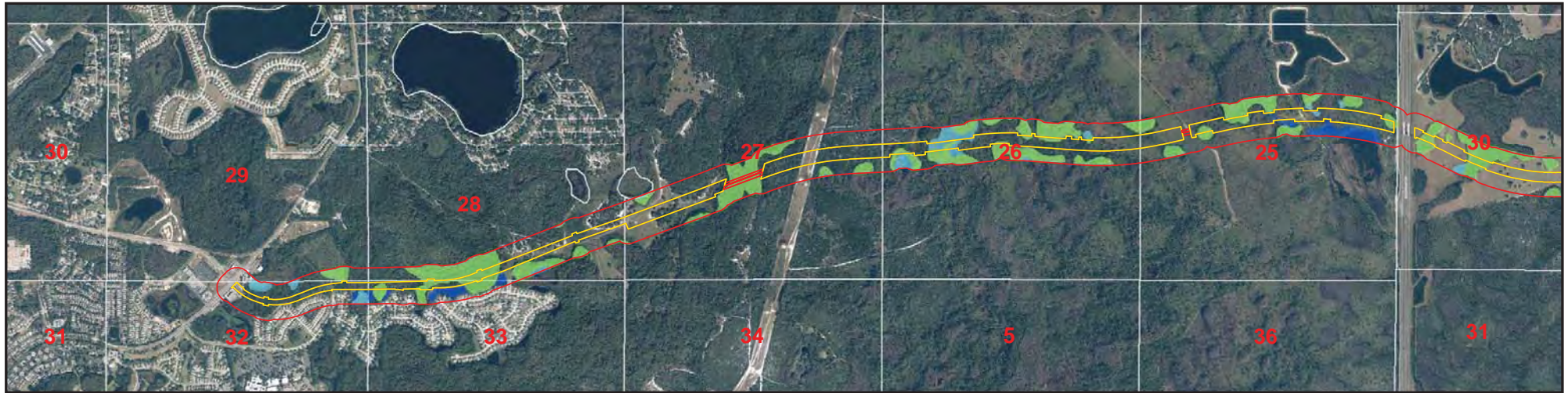


**Ridge Road Extension
Alternatives Analysis**



Drawn Nov. 2014

object Number: 5504-005 D Document: A1_4_wetlands_2014_24.pdf



**Wetland Impacts Map
Alternative 5 Ridge Road Extension**

1 inch = 2,000 feet

Legend

- Alternative 5
- Area of Analysis
- Wetlands and Waterbodies**
- Emergent
- Forested
- Surface Waters

Pasco County Florida

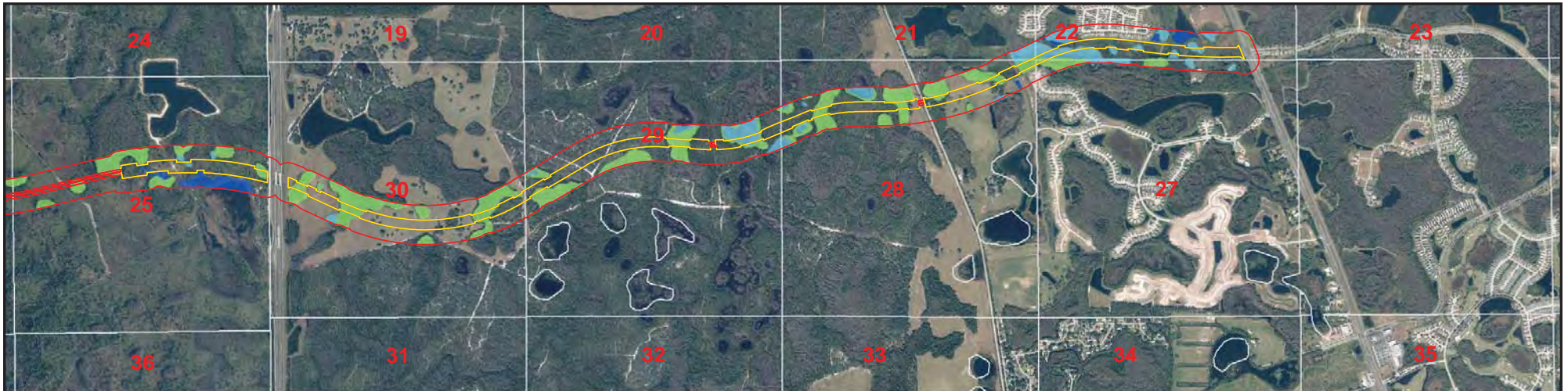
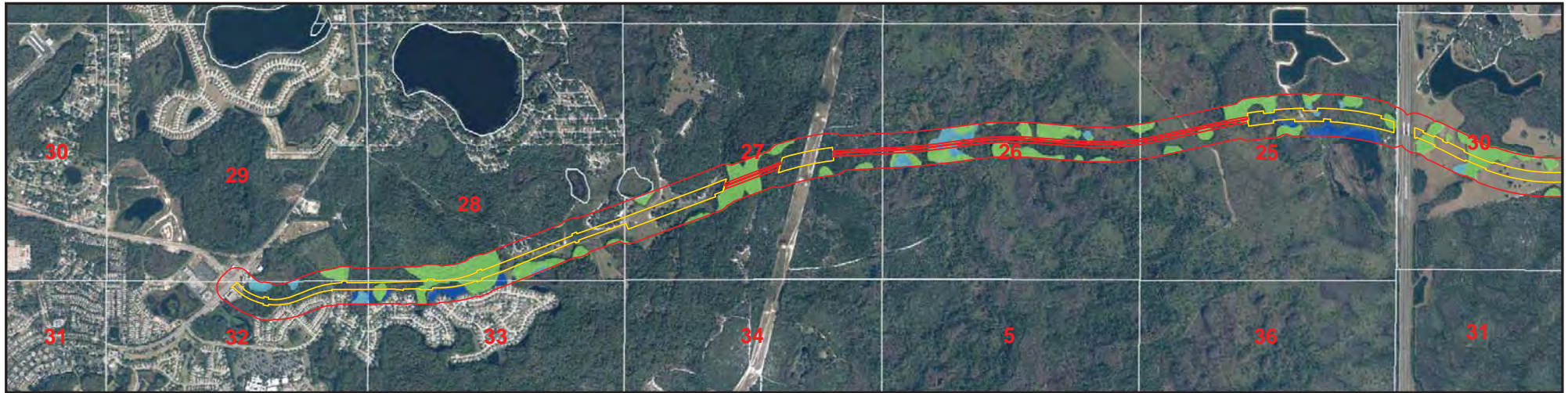


**Ridge Road Extension
Alternatives Analysis**



Drawn Nov. 2014

object Number: 5504-005 D Document: A1_S_wetlands_2014_24.pdf



**Wetland Impacts Map
Alternative 6 Ridge Road Extension**

1 inch = 2,000 feet

Legend	
	Alternative 6
	Area of Analysis
Wetlands and Waterbodies	
	Emergent
	Forested
	Surface Waters

Pasco County Florida

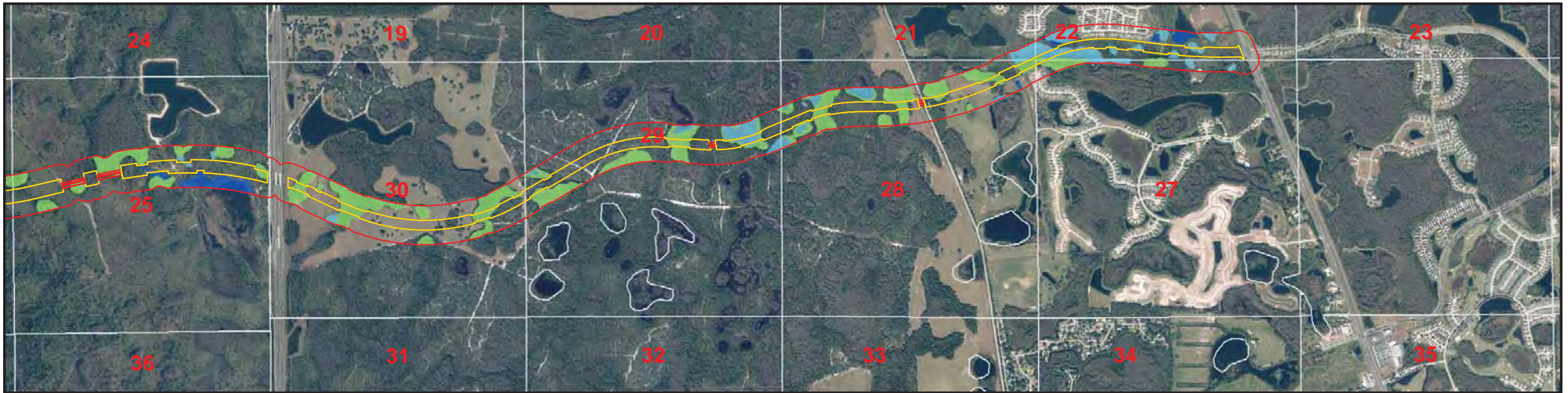
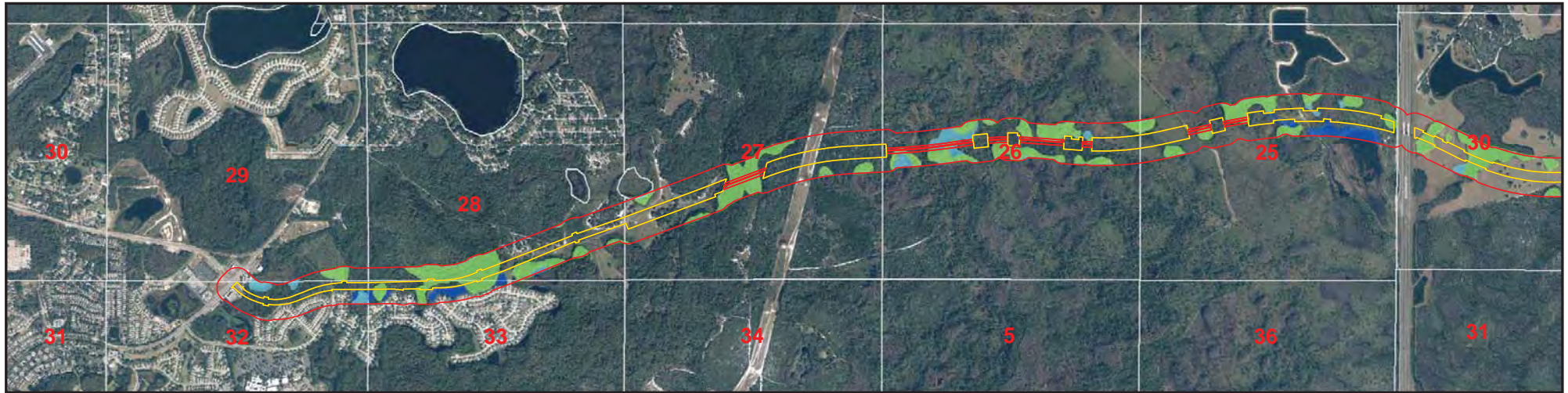


**Ridge Road Extension
Alternatives Analysis**



Drawn Nov. 2014

object Number: 5504-005 D Document: A1_S_wetlands_2014_24.pdf



**Wetland Impacts Map
Alternative 7 Ridge Road Extension**

1 inch = 2,000 feet

Legend

- Alternative 7
- Area of Analysis
- Wetlands and Waterbodies**
- Emergent
- Forested
- Surface Waters

Pasco County Florida

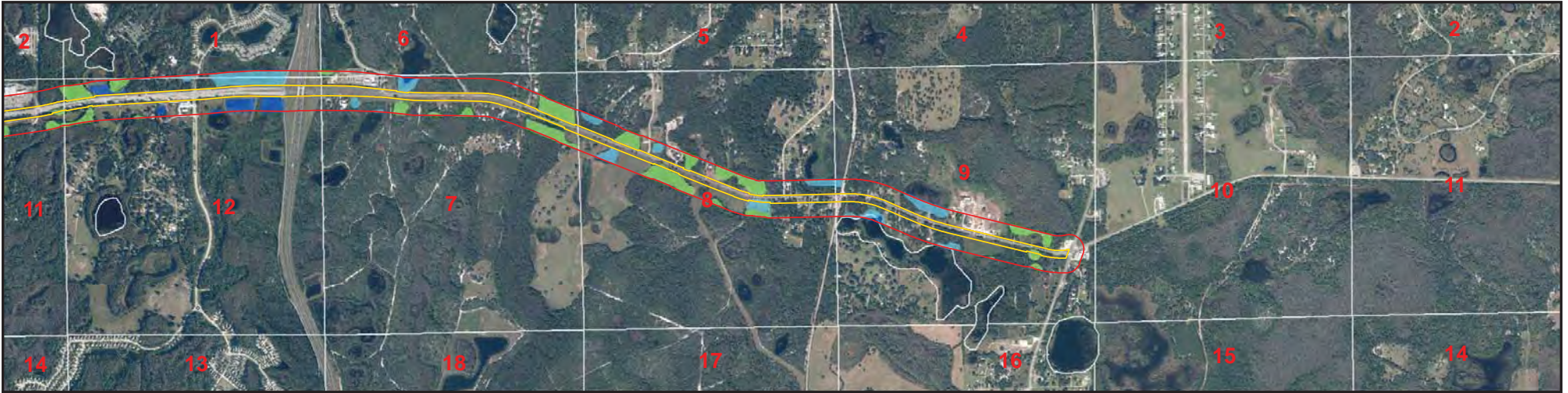


**Ridge Road Extension
Alternatives Analysis**



Drawn Nov. 2014

object Number: 5504-005 D Document: A1_7_wetlands_2014_24.pdf



**Wetland Impacts Map
Alternative 8 Ridge Road Extension**

1 inch = 2,000 feet

Legend

- Alternative 8
- Area of Analysis
- Wetlands and Waterbodies**
- Emergent
- Forested
- Surface Waters

Pasco County Florida

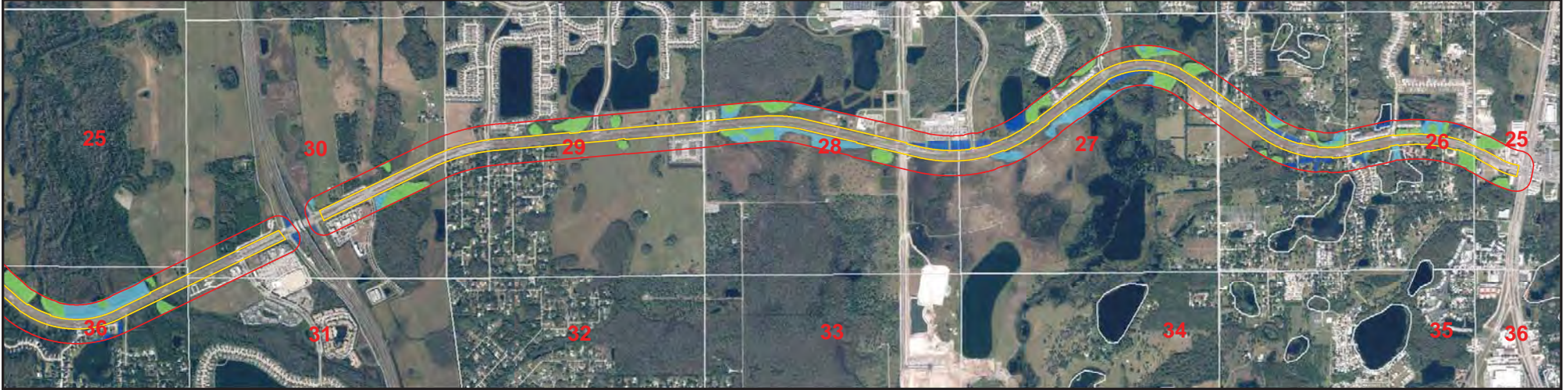


**Ridge Road Extension
Alternatives Analysis**



Drawn Nov. 2014

object Number: 5504-005 D Document: A1_8_wetlands_2014_24.pdf



**Wetland Impacts Map
Alternative 9 Ridge Road Extension**

1 inch = 2,000 feet

Legend

- Alternative 9
- Area of Analysis
- Wetlands and Waterbodies**
- Emergent
- Forested
- Surface Waters

Pasco County Florida

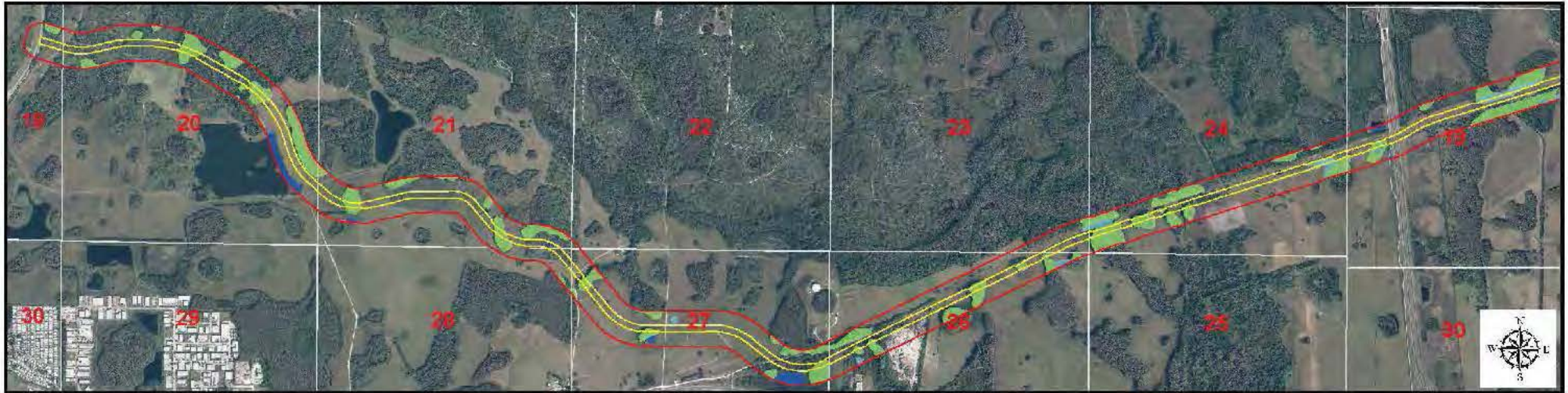


**Ridge Road Extension
Alternatives Analysis**



Drawn Nov. 2014

object Number: 5504-005 D: Document: A1_9_wetlands_2014_24.pdf



Wetland Impacts Map
Alternative 10 Ridge Road Extension

1 inch = 2,000 feet

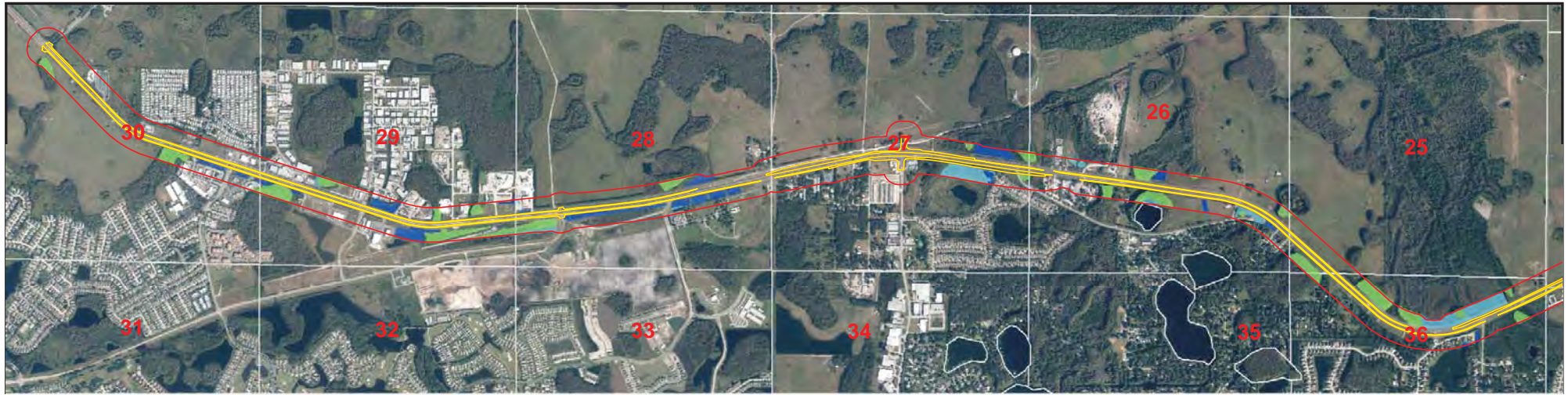
- Legend**
- Alternative 10
 - Area of Analysis
 - Wetlands and Waterbodies**
 - Emergent
 - Forested
 - Surface Waters

Pasco County Florida



Ridge Road Extension
Alternatives Analysis

Drawn Nov. 2014



**Wetland Impacts Map
Alternative 11 Ridge Road Extension**

1 inch = 2,000 feet

Legend

- Alternative 11
- Area of Analysis
- Wetlands and Waterbodies**
- Emergent
- Forested
- Surface Waters

Pasco County Florida

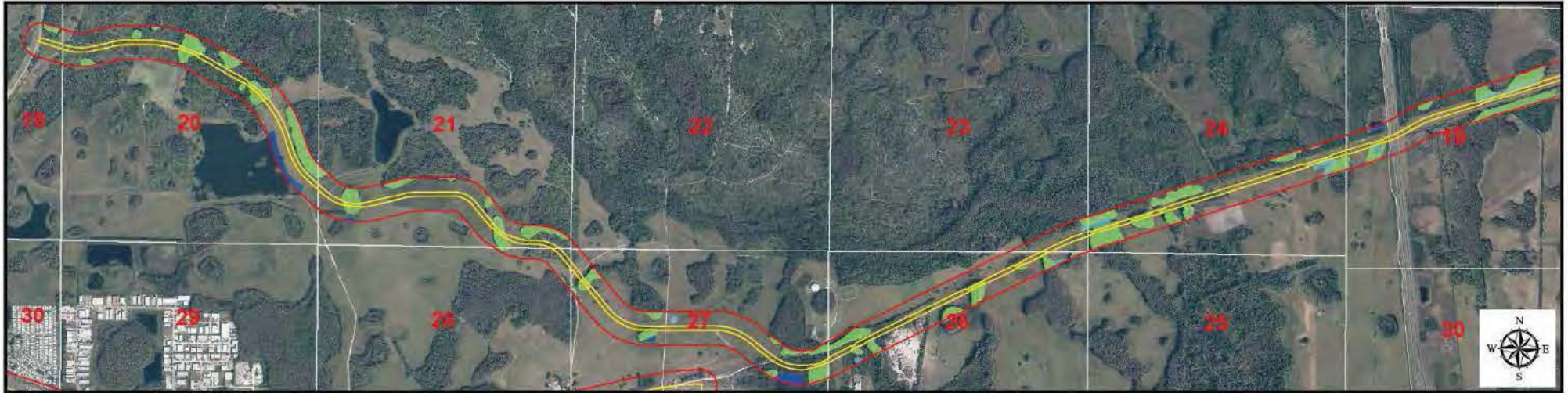


**Ridge Road Extension
Alternatives Analysis**



Drawn Nov. 2014

object Number: 5504-005 D: Document: A11_wetlands_2014_24.pdf



**Wetland Impacts Map
Alternative 12 Ridge Road Extension
Map 1 of 2**

1 inch = 2,000 feet

Legend

- Alternative 12
- Area of Analysis
- Wetlands and Waterbodies**
- Emergent
- Forested
- Surface Waters

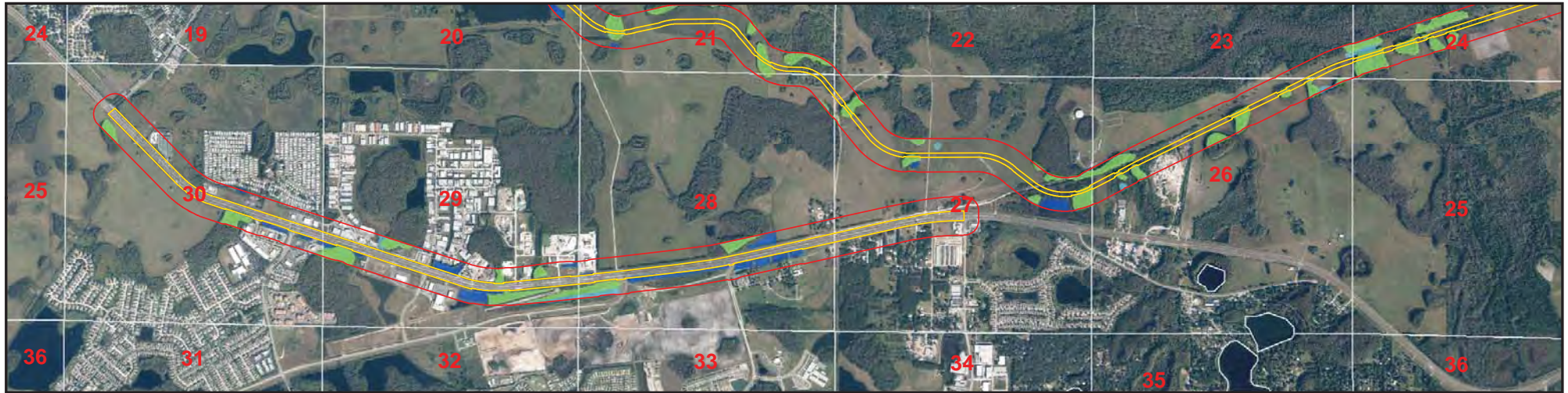
Pasco County Florida



**Ridge Road Extension
Alternatives Analysis**

Drawn Nov. 2014

FileNumber: 664-006 PDF Document: AL_12_wetlands_1_20141004.pdf



Wetland Impacts Map
Alternative 12 Ridge Road Extension
Map 2 of 2

1 inch = 2,000 feet

Legend

- Alternative 12
- Area of Analysis
- Wetlands and Waterbodies**
- Emergent
- Forested
- Surface Waters

Pasco County Florida

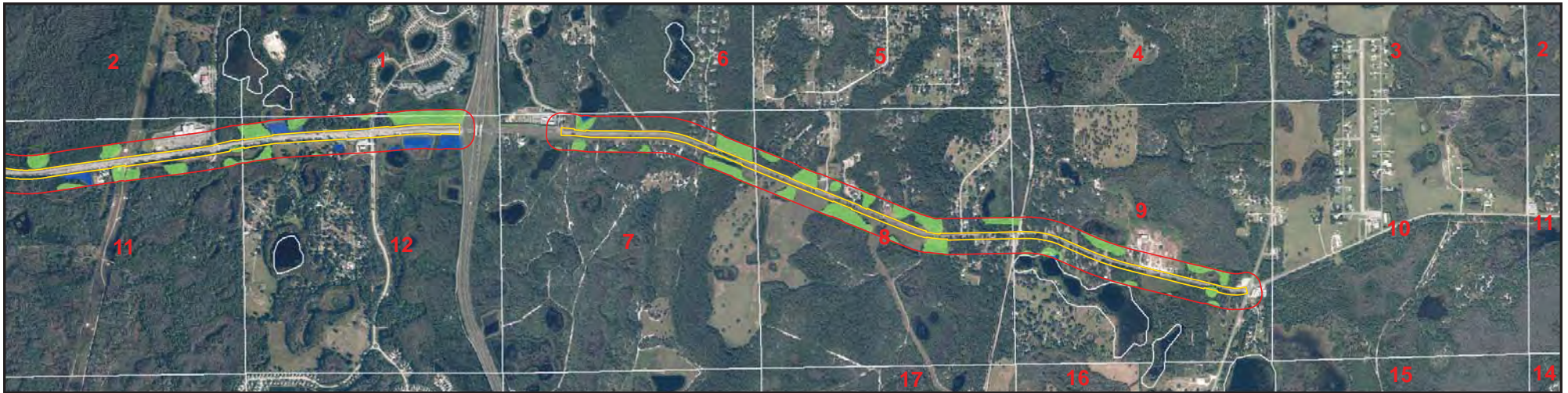
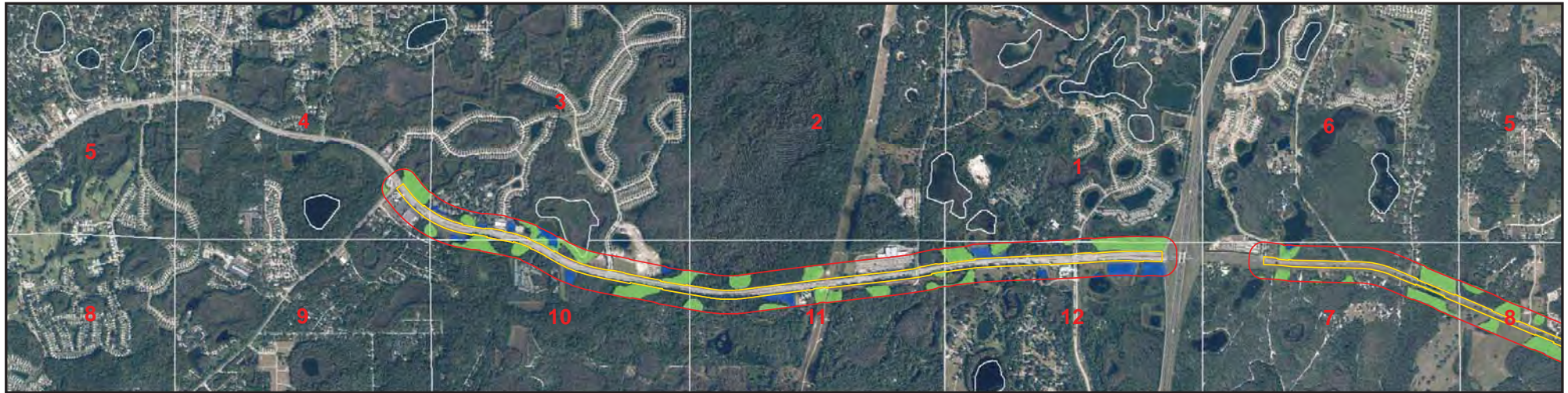


Ridge Road Extension
Alternatives Analysis





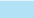


Drawn Nov. 2014

object Number: 5504-005 D Document: A1_2_wetlands_2_20_4_24.pdf



Wetland Impacts Map
Alternative 13 Ridge Road Extension
Map 1 of 2

1 inch = 2,000 feet

Legend	
	Alternative 13
	Area of Analysis
Wetlands and Waterbodies	
	Emergent
	Forested
	Surface Waters

Pasco County Florida



Ridge Road Extension
Alternatives Analysis



Drawn Nov. 2014

object Number: 5504-005 D: Document: A1_3_wetlands_2_20_4_24.pdf



Wetland Impacts Map
Alternative 13 Ridge Road Extension
Map 2 of 2

1 inch = 2,000 feet


Legend

- Alternative 13
- Area of Analysis


Wetlands and Waterbodies

- Emergent
- Forested
- Surface Waters

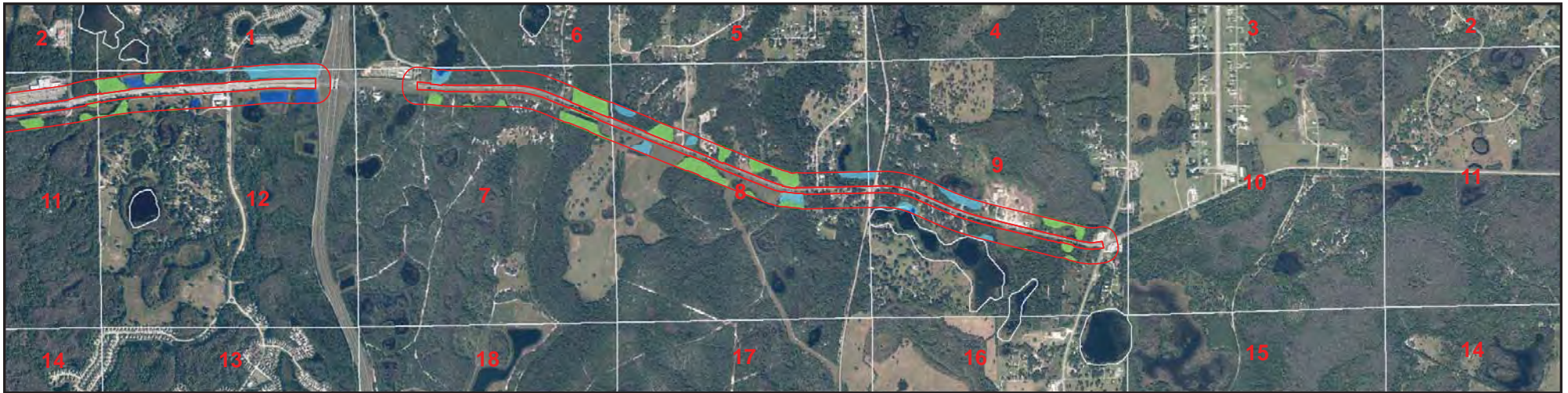
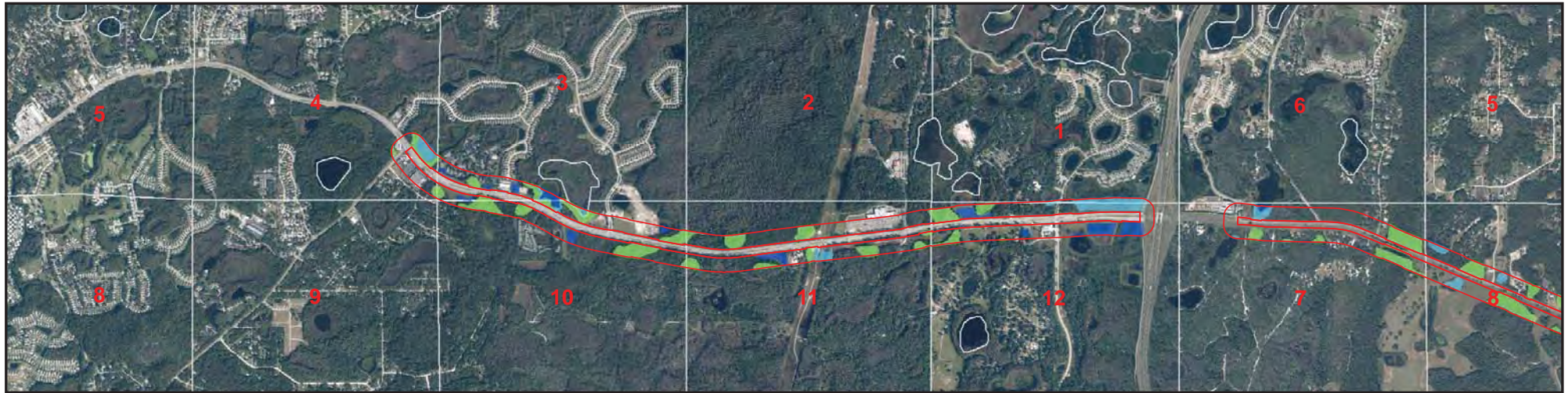
Pasco County Florida



**Ridge Road Extension
 Alternatives Analysis**



Drawn Nov. 2014 object Number: 5504-005 D Document: A1_3_wetlands_2_20 4 24.pdf



Wetland Impacts Map
Alternative 14 Ridge Road Extension
Map 1 of 2

1 inch = 2,000 feet

Legend

- Alternative 14
- Area of Analysis
- Wetlands and Waterbodies**
- Emergent
- Forested
- Surface Waters

Pasco County Florida

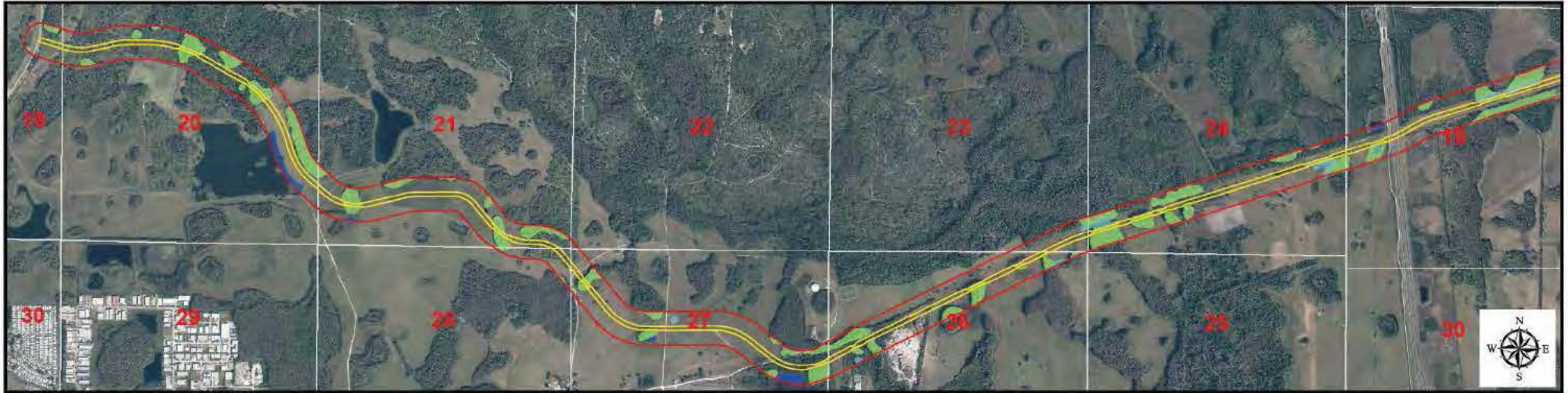


Ridge Road Extension
Alternatives Analysis



Drawn Nov. 2014

object Number: 5504-005 D Document: A1_4_wetlands_10 4 24.pdf



Wetland Impacts Map
Alternative 14 Ridge Road Extension
Map 2 of 2

1 inch = 2,000 feet

- Legend**
- Alternative 14
 - Area of Analysis
- Wetlands and Waterbodies**
- Emergent
 - Forested
 - Surface Waters

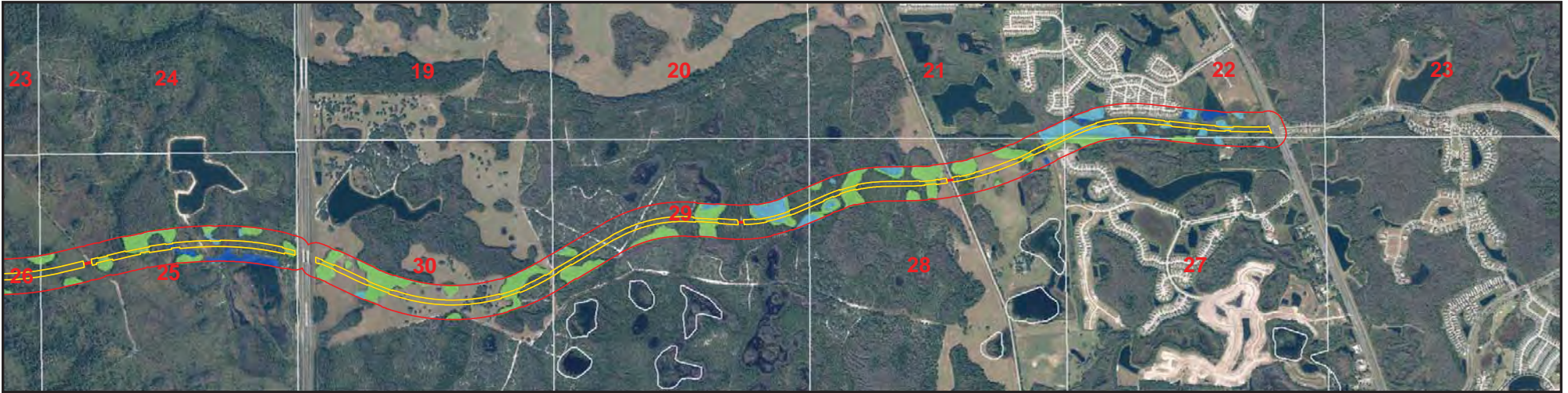
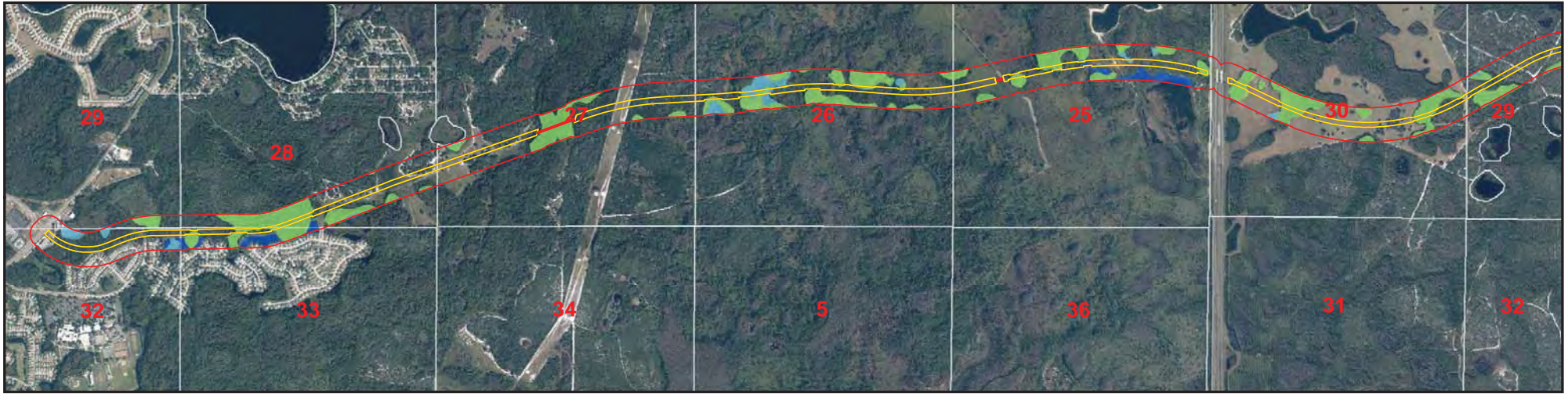
Pasco County Florida



Ridge Road Extension
Alternatives Analysis

Drawn Nov. 2014

FileNumber: 664-006 PDF Document: AL_14_wetlands_2_20141004.pdf



Wetland Impacts Map
Alternative 15 Ridge Road Extension
Map 1 of 2

1 inch = 2,000 feet

- Legend**
- Alternative 15
 - Area of Analysis
- Wetlands and Waterbodies**
- Emergent
 - Forested
 - Surface Waters

Pasco County Florida



Ridge Road Extension
Alternatives Analysis



Drawn Nov. 2014

object Number: 5504-005 D: Document: A1_5_wetlands_11_20_14 24.pdf



Wetland Impacts Map
Alternative 15 Ridge Road Extension
Map 2 of 2

1 inch = 2,000 feet

- Legend**
- Alternative 15
 - Area of Analysis
- Wetlands and Waterbodies**
- Emergent
 - Forested
 - Surface Waters

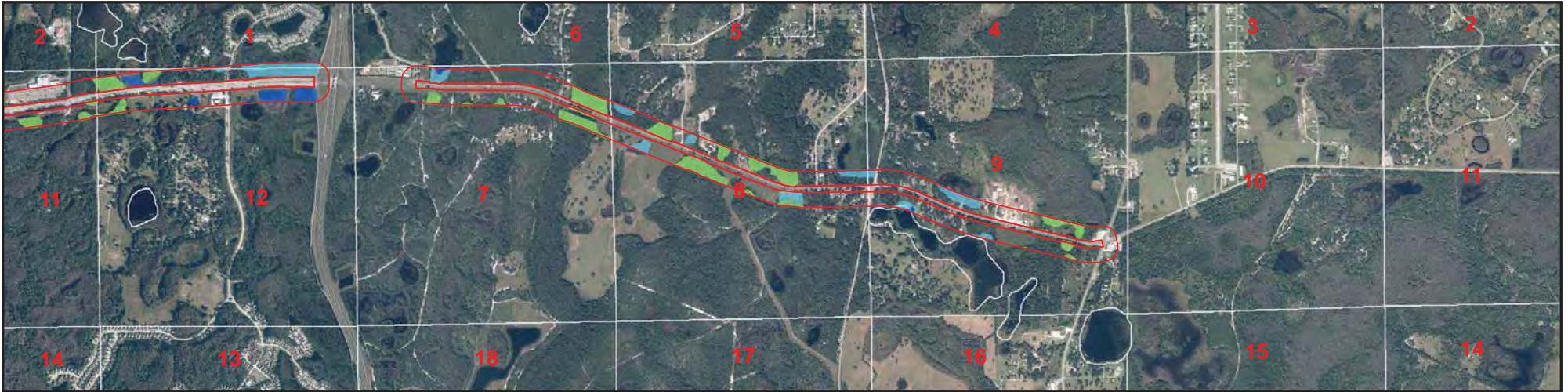
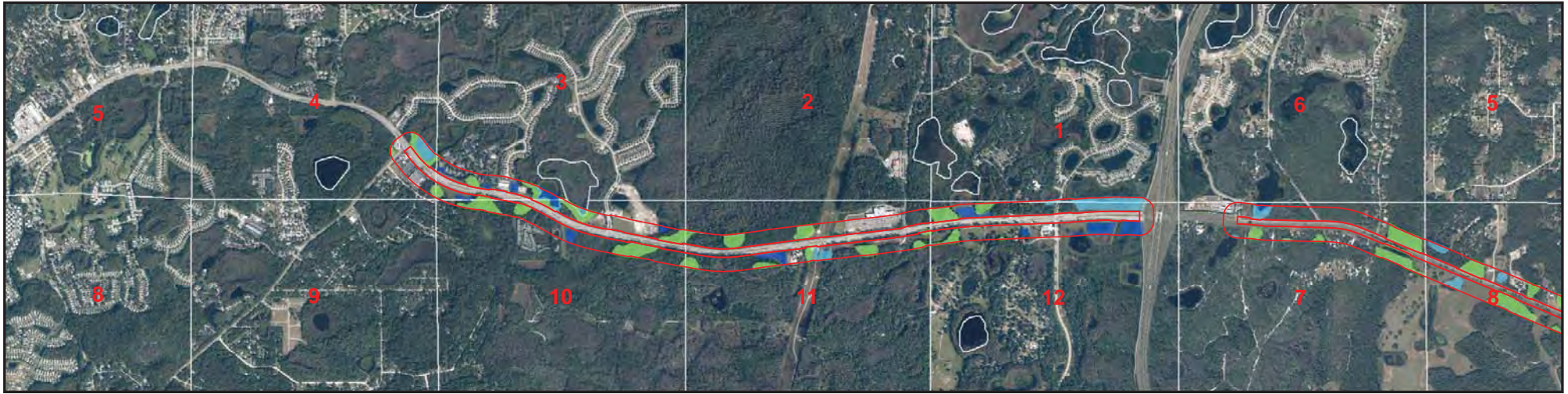
Pasco County Florida



Ridge Road Extension
Alternatives Analysis

Drawn Nov. 2014

FileNumber: 664-006 PDF Document: AL_15_wetlands_2_20141104.pdf



Wetland Impacts Map
Alternative 16 Ridge Road Extension
Map 1 of 2

1 inch = 2,000 feet

Legend

- Alternative 16
- Area of Analysis

Wetlands and Waterbodies

- Emergent
- Forested
- Surface Waters

Pasco County Florida

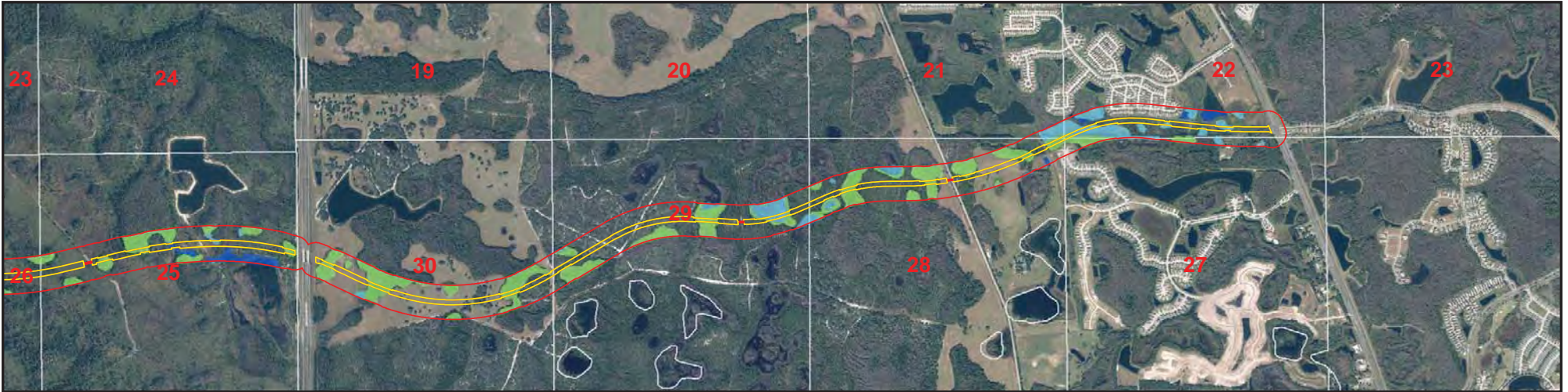
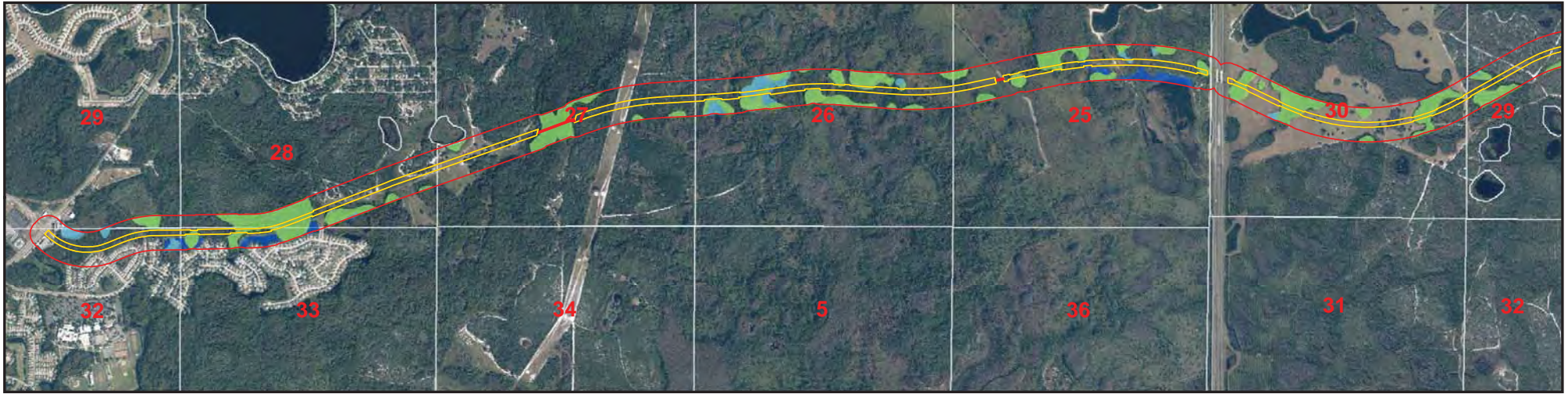


Ridge Road Extension
Alternatives Analysis



Drawn Nov. 2014

object Number: 5504-005 D Document: A1_6_wetlands_10 4 24.pdf



Wetland Impacts Map
Alternative 16 Ridge Road Extension
Map 2 of 2

1 inch = 2,000 feet

Legend

- Alternative 16
- Area of Analysis
- Wetlands and Waterbodies**
- Emergent
- Forested
- Surface Waters

Pasco County Florida

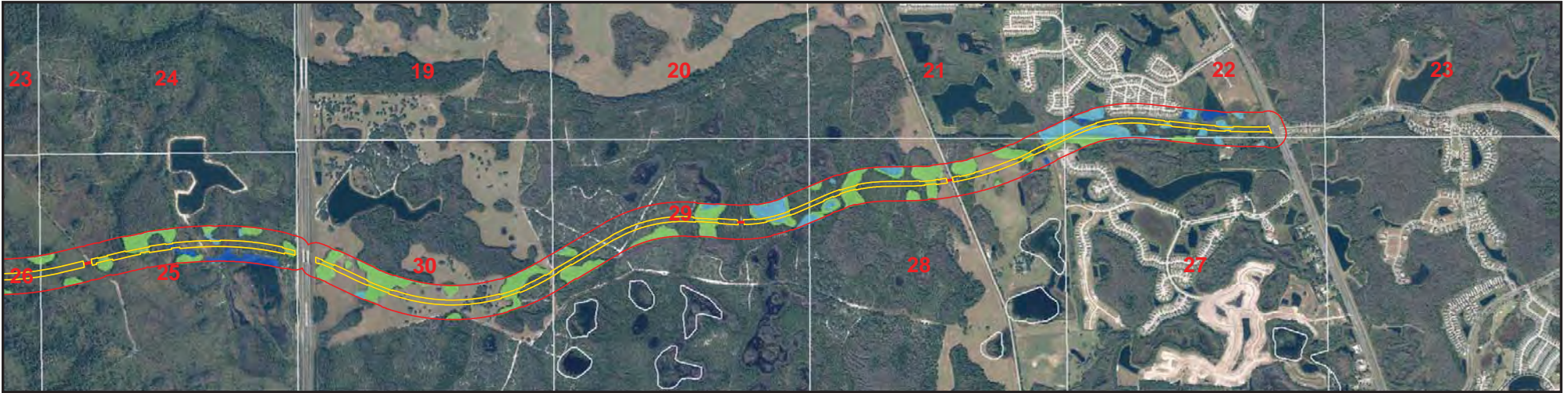
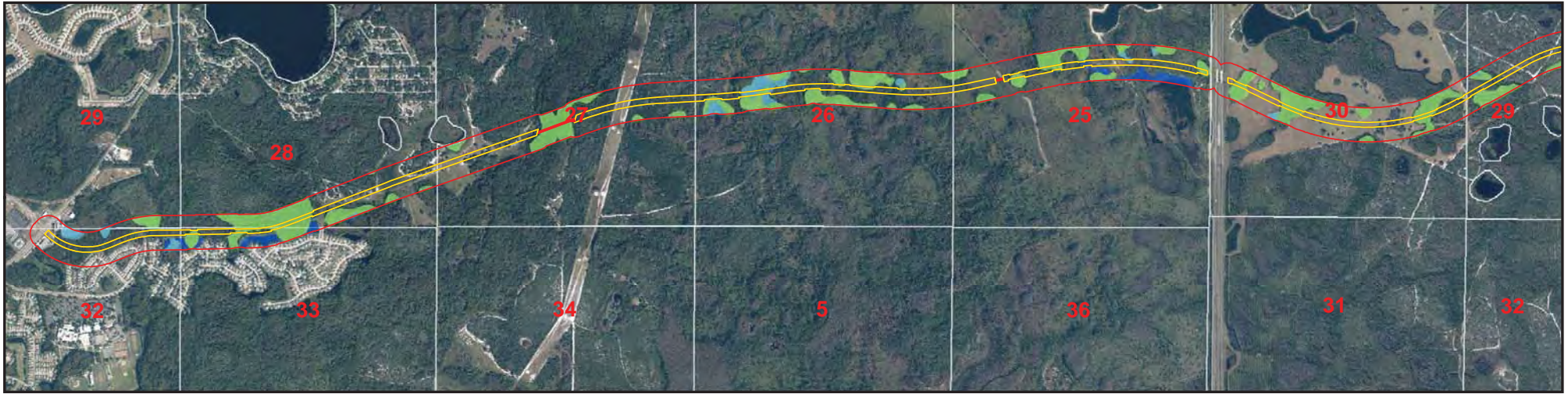


Ridge Road Extension
Alternatives Analysis



Drawn Nov. 2014

object Number: 5504-005 D Document: A1_6_wetlands_2_20_4 24.pdf



Wetland Impacts Map
Alternative 17 Ridge Road Extension
Map 1 of 2

1 inch = 2,000 feet

- Legend**
- Alternative 17
 - Area of Analysis
- Wetlands and Waterbodies**
- Emergent
 - Forested
 - Surface Waters

Pasco County Florida

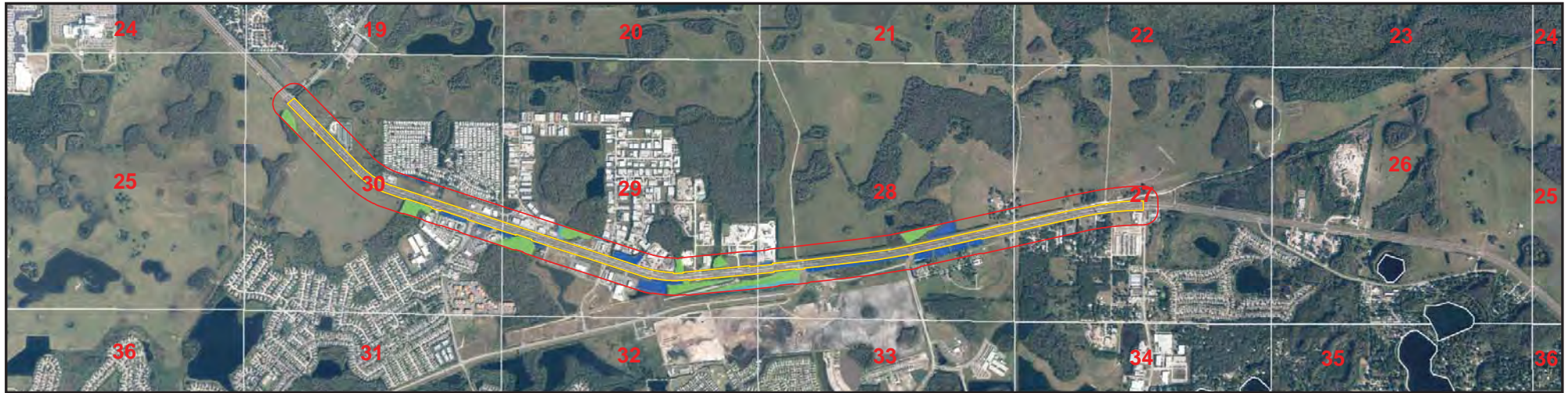


Ridge Road Extension
Alternatives Analysis



Drawn Nov. 2014

object Number: 5504-005 D: Document: A1_7_wetlands_11_20_14 24.pdf



Wetland Impacts Map
Alternative 17 Ridge Road Extension
Map 2 of 2

1 inch = 2,000 feet

Legend

- Alternative 17
- Area of Analysis

Wetlands and Waterbodies

- Emergent
- Forested
- Surface Waters

Pasco County Florida



Ridge Road Extension
Alternatives Analysis



Drawn Nov. 2014

object Number: 5504-005 D Document: A1_7_wetlands_11_20_14 24.pdf